

Menu Listing with Front of Packet and Allergens

Craig

Menu: **Vive SS Week 1 Monday**

Contains

Contains
 Does Not Contain
 May Contain
 * No Information

- Peanuts
- Nuts
- Crustaceans
- Molluscs
- Fish
- Eggs
- Milk
- Gluten
- Soya
- Sesame
- Celery
- Mustard
- Lupin
- Sulphur Dioxide and

Product Description

(291.3683g) contains

Carbohydrate 57.86g	Energy 1857kJ 444kcal	22%	Fat 15g	22%	Saturates 7.6g	38%	Sugars 11g	12%	Salt 1.6g	27%
------------------------	-----------------------------	-----	------------	-----	-------------------	-----	---------------	-----	--------------	-----

of an adult's Reference Intake

Typical values (as sold) per 100g: Energy 637kJ / 152kcal

-

(288.5g) contains

Carbohydrate 77.66g	Energy 2848kJ 681kcal	34%	Fat 30g	42%	Saturates 15g	76%	Sugars 6.9g	8%	Salt 1.4g	23%
------------------------	-----------------------------	-----	------------	-----	------------------	-----	----------------	----	--------------	-----

of an adult's Reference Intake

Typical values (as sold) per 100g: Energy 987kJ / 236kcal

-

(161.57g) contains

Carbohydrate 45.85g	Energy 979kJ 234kcal	12%	Fat 2.7g	4%	Saturates 0.5g	3%	Sugars 7.7g	9%	Salt 1.9g	32%
------------------------	----------------------------	-----	-------------	----	-------------------	----	----------------	----	--------------	-----

of an adult's Reference Intake

Typical values (as sold) per 100g: Energy 606kJ / 145kcal

-

(191.57g) contains

Carbohydrate 38.25g	Energy 1011kJ 242kcal	12%	Fat 3.7g	5%	Saturates 0.8g	4%	Sugars 7.5g	8%	Salt 1.9g	32%
------------------------	-----------------------------	-----	-------------	----	-------------------	----	----------------	----	--------------	-----

of an adult's Reference Intake

Typical values (as sold) per 100g: Energy 528kJ / 126kcal

-

Menu Listing with Front of Packet and Allergens

Craig

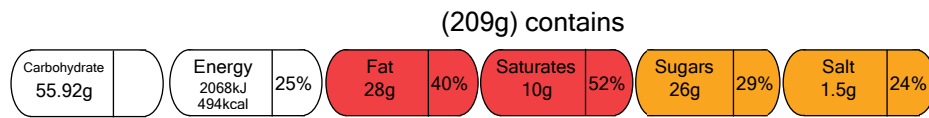
Menu: **Vive SS Week 1 Monday**

Contains
 Does Not Contain
 May Contain
 * No Information

Contains											
Peanuts	Nuts	Crustaceans	Molluscs	Fish	Eggs	Milk	Gluten	Soya	Sesame	Celery	Mustard
											Lupin
											Sulphur Dioxide and

Product Description

Warm Blueberry Sponge with Custard



of an adult's Reference Intake

Typical values (as sold) per 100g: Energy 989kJ / 236kcal