

Menu Listing with Front of Packet and Allergens

Craig

Menu: **Vive Autumn Week 2 Wednesday**

Contains   
  Does Not Contain   
  May Contain   
 \* No Information

Contains													
Peanuts	Nuts	Crustaceans	Molluscs	Fish	Eggs	Milk	Gluten	Soya	Sesame	Celery	Mustard	Lupin	Sulphur Dioxide and

Product Description

(304.4353g) contains

Carbohydrate 67.32g	Energy 2499kJ 597kcal	30%	Fat 25g	36%	Saturates 9.0g	45%	Sugars 19g	21%	Salt 0.66g	11%
------------------------	-----------------------------	-----	------------	-----	-------------------	-----	---------------	-----	---------------	-----

of an adult's Reference Intake

Typical values (as sold) per 100g: Energy 821kJ / 196kcal

(252.89g) contains

Carbohydrate 69.55g	Energy 1565kJ 374kcal	19%	Fat 3.2g	5%	Saturates 0.7g	3%	Sugars 9.0g	10%	Salt 1.1g	18%
------------------------	-----------------------------	-----	-------------	----	-------------------	----	----------------	-----	--------------	-----

of an adult's Reference Intake

Typical values (as sold) per 100g: Energy 619kJ / 148kcal

(177.02g) contains

Carbohydrate 36.09g	Energy 1523kJ 363kcal	18%	Fat 15g	21%	Saturates 8.2g	41%	Sugars 4.3g	5%	Salt 1.7g	28%
------------------------	-----------------------------	-----	------------	-----	-------------------	-----	----------------	----	--------------	-----

of an adult's Reference Intake

Typical values (as sold) per 100g: Energy 860kJ / 205kcal

(337.15g) contains

Carbohydrate 80.97g	Energy 2526kJ 602kcal	30%	Fat 19g	28%	Saturates 2.9g	15%	Sugars 26g	29%	Salt 2.6g	43%
------------------------	-----------------------------	-----	------------	-----	-------------------	-----	---------------	-----	--------------	-----

of an adult's Reference Intake

Typical values (as sold) per 100g: Energy 749kJ / 179kcal

Menu Listing with Front of Packet and Allergens

Craig

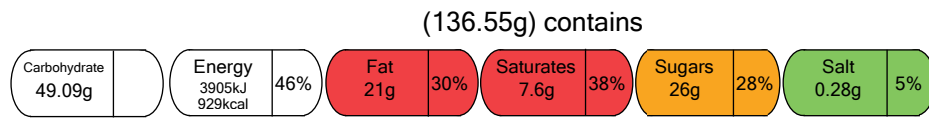
Menu: **Vive Autumn Week 2 Wednesday**

Contains   
  Does Not Contain   
  May Contain   
  \* No Information

Contains													
Peanuts	Nuts	Crustaceans	Molluscs	Fish	Eggs	Milk	Gluten	Soya	Sesame	Celery	Mustard	Lupin	Sulphur Dioxide and

Product Description

Blackberry & Apple  
Crumble Cake with  
Custard



of an adult's Reference Intake

Typical values (as sold) per 100g: Energy 2860kJ / 680kcal

