

Menu Listing with Front of Packet and Allergens

Craig

Menu: **Vive Autumn 2017 Week2 Monday**

Contains
 Does Not Contain
 May Contain
 No Information

Contains													
Peanuts	Nuts	Crustaceans	Molluscs	Fish	Eggs	Milk	Gluten	Soya	Sesame	Celery	Mustard	Lupin	Sulphur Dioxide and

Product Description

(300.5579g) contains

Carbohydrate 61.57g	Energy 2448kJ 585kcal	29%	Fat 24g	34%	Saturates 8.6g	43%	Sugars 5.7g	6%	Salt 1.1g	18%
------------------------	-----------------------------	-----	------------	-----	-------------------	-----	----------------	----	--------------	-----

of an adult's Reference Intake

Typical values (as sold) per 100g: Energy 815kJ / 195kcal

(363.2884g) contains

Carbohydrate 71.44g	Energy 2231kJ 533kcal	27%	Fat 20g	28%	Saturates 7.9g	39%	Sugars 6.5g	7%	Salt 1.2g	19%
------------------------	-----------------------------	-----	------------	-----	-------------------	-----	----------------	----	--------------	-----

of an adult's Reference Intake

Typical values (as sold) per 100g: Energy 614kJ / 147kcal

(283.534g) contains

Carbohydrate 72.62g	Energy 1643kJ 395kcal	20%	Fat 4.2g	6%	Saturates 1.0g	5%	Sugars 8.6g	10%	Salt 0.16g	3%
------------------------	-----------------------------	-----	-------------	----	-------------------	----	----------------	-----	---------------	----

of an adult's Reference Intake

Typical values (as sold) per 100g: Energy 579kJ / 139kcal

(262g) contains

Carbohydrate 54.5g	Energy 1880kJ 451kcal	22%	Fat 17g	24%	Saturates 9.0g	45%	Sugars 6.5g	7%	Salt 1.7g	28%
-----------------------	-----------------------------	-----	------------	-----	-------------------	-----	----------------	----	--------------	-----

of an adult's Reference Intake

Typical values (as sold) per 100g: Energy 718kJ / 172kcal

Menu Listing with Front of Packet and Allergens

Craig

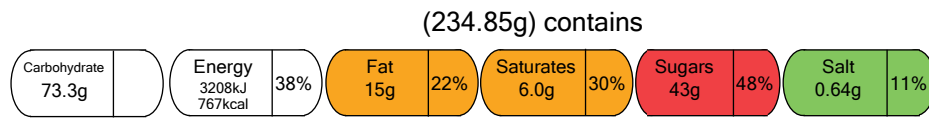
Menu: **Vive Autumn 2017 Week2 Monday**

Contains
 Does Not Contain
 May Contain
 * No Information

Contains											
Peanuts	Nuts	Crustaceans	Molluscs	Fish	Eggs	Milk	Gluten	Soya	Sesame	Celery	Mustard
											Lupin
											Sulphur Dioxide and

Product Description

Gingerbread Cake & Custard



of an adult's Reference Intake

Typical values (as sold) per 100g: Energy 1366kJ / 326kcal

