

Menu Listing with Front of Packet and Allergens

Craig

Menu: **Vive Spring 2017 week 1 Wednesday**

Contains
 Does Not Contain
 May Contain
 * No Information

Contains													
Peanuts	Nuts	Crustaceans	Molluscs	Fish	Eggs	Milk	Gluten	Soya	Sesame	Celery	Mustard	Lupin	Sulphur Dioxide and

Product Description

(338.954g) contains

Carbohydrate 59.91g	Energy 1727kJ 415kcal	21%	Fat 6.0g	9%	Saturates 1.7g	8%	Sugars 6.1g	7%	Salt 0.68g	11%
------------------------	-----------------------------	-----	-------------	----	-------------------	----	----------------	----	---------------	-----

of an adult's Reference Intake

Typical values (as sold) per 100g: Energy 510kJ / 122kcal

(342.9g) contains

Carbohydrate 48.62g	Energy 1238kJ 296kcal	15%	Fat 7.2g	10%	Saturates 1.1g	6%	Sugars 7.3g	8%	Salt 0.53g	9%
------------------------	-----------------------------	-----	-------------	-----	-------------------	----	----------------	----	---------------	----

of an adult's Reference Intake

Typical values (as sold) per 100g: Energy 361kJ / 86kcal

(199.5964g) contains

Carbohydrate 38.58g	Energy 1452kJ 349kcal	17%	Fat 14g	20%	Saturates 4.4g	22%	Sugars 6.6g	7%	Salt 0.81g	14%
------------------------	-----------------------------	-----	------------	-----	-------------------	-----	----------------	----	---------------	-----

of an adult's Reference Intake

Typical values (as sold) per 100g: Energy 728kJ / 175kcal

(214.6g) contains

Carbohydrate 58.88g	Energy 2104kJ 503kcal	25%	Fat 19g	28%	Saturates 6.0g	30%	Sugars 2.2g	2%	Salt 0.39g	6%
------------------------	-----------------------------	-----	------------	-----	-------------------	-----	----------------	----	---------------	----

of an adult's Reference Intake

Typical values (as sold) per 100g: Energy 980kJ / 234kcal

Menu Listing with Front of Packet and Allergens

Craig

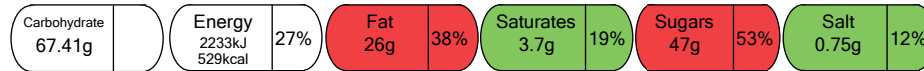
Menu: **Vive Spring 2017 week 1 Wednesday**

Contains
 Does Not Contain
 May Contain
 * No Information

Contains													
Peanuts	Nuts	Crustaceans	Molluscs	Fish	Eggs	Milk	Gluten	Soya	Sesame	Celery	Mustard	Lupin	Sulphur Dioxide and

Product Description

Carrot, Banana and Orange Sponge cake



(287.1g) contains

of an adult's Reference Intake

Typical values (as sold) per 100g: Energy 778kJ / 184kcal

